

Lemme Start! 2019|20

Raw | Real | Relevant

P Poetry
Ireland
Éigse
Éireann



Preparation and Planning Event

Junior Cycle for Teachers (JCT) in collaboration with Poetry Ireland



Rialtas na hÉireann
Government of Ireland

Clár Éire Ildánach
Creative Ireland
Programme
2017–2022



An tSraith Shóisearach do Mhúinteoirí
Junior**CYCLE**
for teachers



Lemme Start!

Lemme Start! is an elective Arts in Junior Cycle initiative supported by Junior Cycle for Teachers (JCT) in collaboration with Poetry Ireland.

Lemme Start! will focus on engagement, collaboration, process and expression. It's not about perfect punctuation or polished performance. It's raw, it's real and it's relevant to the principles and key skills which underpin the Framework for Junior Cycle (2015), the Arts in Education Charter, and the Creative Ireland Programme (2017 – 2022), Pillar 1 Creative Youth.

In a series of visits, using a range of practical pedagogies, the teacher in collaboration with the visiting literary artist (spoken word artist, poet, novelist or playwright, etc.) will aim to instil in students a creative disposition where they are encouraged to play with ideas, take risks and reflect on their creative processes. Students will be provided with time and space to consider the world, their place in it and how they might express themselves.

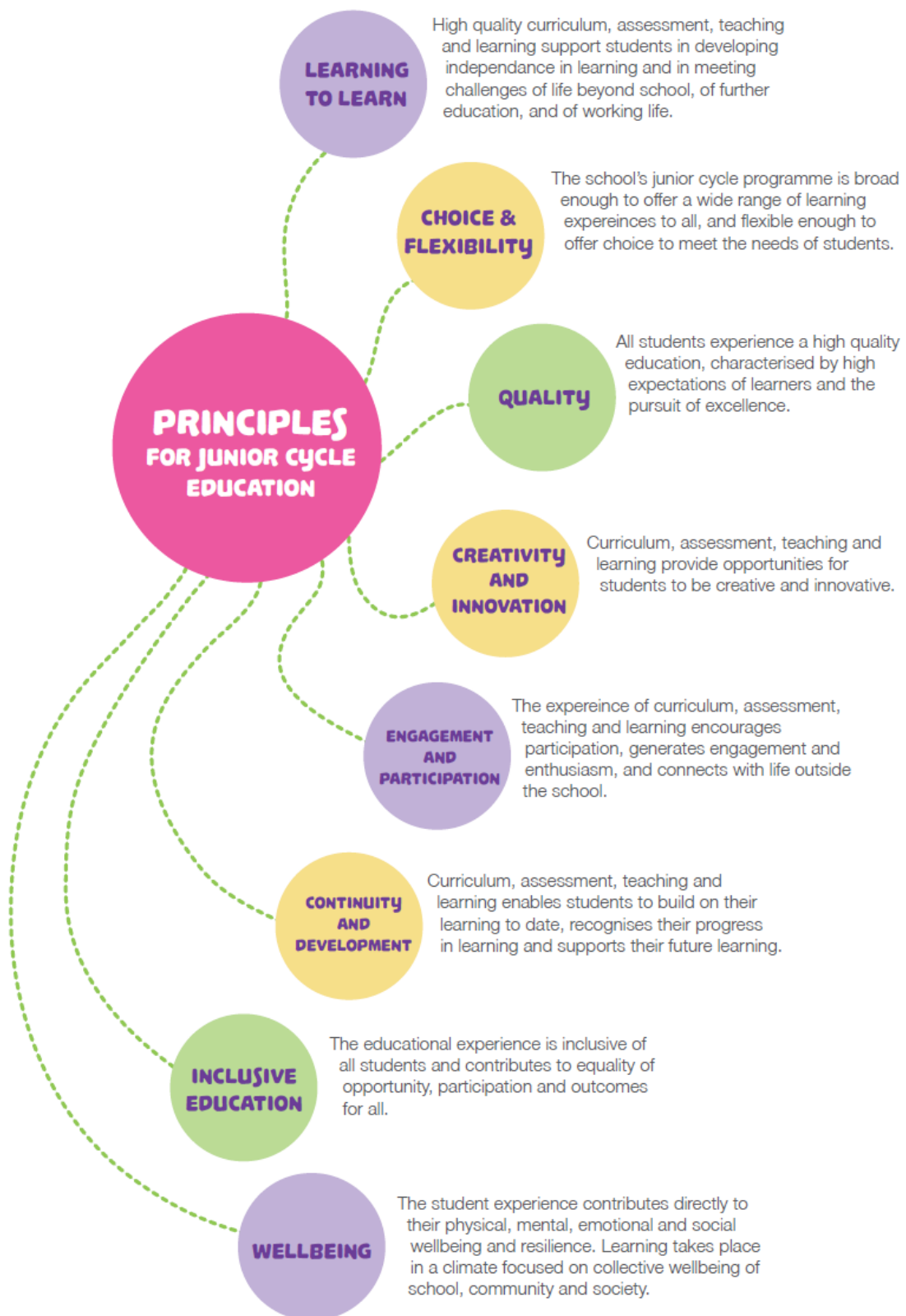
Lemme Start! will provide teachers of a junior cycle first year class, from any subject or discipline, with an opportunity to collaborate with a visiting literary artist for up to six hours of teacher and/or class contact time to further support their understanding of the junior cycle principles and key skills.

Participating schools/teachers have agreed to:

In participating in this elective initiative, please note the following:

- This elective initiative is for junior cycle **first year students only** and their teachers.
- Should your school's application be successful, the school must be available to host a visiting literary artist, from the 1st of December to the 15th May 2020.
- Participation in this elective initiative will require a partnership approach, where the visiting literary artist and the teacher will have shared responsibility for its planning and delivery.
- The teacher must be present in the room, with the visiting literary artist and the students, at all times.
- The teacher will be required to attend a Collaboration Planning Day on Saturday 30th November 2019 in Poetry Ireland, 11 Parnell Square E, Rotunda, Dublin, D01 ND60. The collaboration day will comprise an outline of the vision for this initiative, formal introductions, planning logistics and criteria for engagement.
- The teacher will be required to commit to a peer reflection event (to take place regionally in May 2020).
- Participating teachers and schools will agree to secure relevant permissions, through completion of student, parent/guardian and school consent forms.
- Upon completion of this initiative teachers will be required to submit:
 - a short online evaluation report. This report will form part of our professional conversations during the peer reflection event in May 2020
 - a sample of student work which documented the Lemme Start! initiative in your school.
- The school agrees to secure any necessary permission in relation to sharing students work and students being photographed as part of the Lemme Start! initiative. Photographs will be used for documentation and evaluation purposes only unless otherwise requested by Junior Cycle for Teacher (JCT) or Poetry Ireland.
- Furnish evidence of insurance cover for the literary artist while on the school premises.
 - Ensure compliance with the requirements of the National Vetting Bureau (Children and Vulnerable Persons) Acts 2012 to 2016 (the Vetting Act) and with relevant Department of Education circulars in relation to Garda vetting of school persons who undertake relevant work or activities with children or vulnerable persons.
- Make student's work available to JCT and/or Poetry Ireland for promotional purposes for a defined period, if requested.
- JCT, Poetry Ireland and Arts in Junior Cycle must be credited on any promotional material that may be used in connection with the Lemme Start! programme.

The Principles of Junior Cycle



The Key Skills of Junior Cycle

There are eight key skills required for successful learning by students across the curriculum and for learning beyond school. These key skills and their elements are outlined below.



Statements of Learning

The learning at the core of Junior Cycle is described in twenty-four statements of learning.

These statements of learning are central to the students' experience of the junior cycle programme.

The student:

- 1) communicates effectively using a variety of means in a range of contexts in L15*
- 2) listens, speaks, reads and writes in L2 and one other language at a level of proficiency that is appropriate to her or his ability
- 3) creates, appreciates and critically interprets a wide range of texts
- 4) creates and presents artistic works and appreciates the process and skills involved
- 5) has an awareness of personal values and an understanding of the process of moral decision making
- 6) appreciates and respects how diverse values, beliefs and traditions have contributed to the communities and culture in which she/he lives
- 7) values what it means to be an active citizen, with rights and responsibilities in local and wider contexts
- 8) values local, national and international heritage, understands the importance of the relationship between past and current events and the forces that drive change
- 9) understands the origins and impacts of social, economic, and environmental aspects of the world around her/him
- 10) has the awareness, knowledge, skills, values and motivation to live sustainably
- 11) takes action to safeguard and promote her/his wellbeing and that of others
- 12) is a confident and competent participant in physical activity and is motivated to be physically active
- 13) understands the importance of food and diet in making healthy lifestyle choices
- 14) makes informed financial decisions and develops good consumer skills
- 15) recognises the potential uses of mathematical knowledge, skills and understanding in all areas of learning
- 16) describes, illustrates, interprets, predicts and explains patterns and relationships
- 17) devises and evaluates strategies for investigating and solving problems using mathematical knowledge, reasoning and skills
- 18) observes and evaluates empirical events and processes and draws valid deductions and conclusions
- 19) values the role and contribution of science and technology to society, and their personal, social and global importance
- 20) uses appropriate technologies in meeting a design challenge
- 21) applies practical skills as she/he develop models and products using a variety of materials and technologies
- 22) takes initiative, is innovative and develops entrepreneurial skills
- 23) brings an idea from conception to realisation
- 24) uses technology and digital media tools to learn, communicate, work and think collaboratively and creatively in a responsible and ethical manner

**5 L1 is the language medium of the school (English in English-medium schools; Irish in Irish-medium schools). L2 is the second language (Irish in English-medium schools; English in Irish-medium schools).*



Collaborative Project Planning

School Name	
Address	
Postcode	
Principal's name	
Contact Number	
School email	
Teacher Name	
Contact Number	
Email	
<i>Preferred method of communication & times</i>	
Teacher area of speciality	
Literary Artist Name	
Contact Number	
Email	
<i>Preferred method of communication & times</i>	
Literary Artist area of Speciality	
One Class Group	
Class Size	
Any Special requirements or Supports needed	

Scope

The Lemme Start! initiative emphasises:

- Divergent thinking
- Risk taking and Experimentation
- Engagement
- Collaboration
- Process
- Expression
- Reflection

Theme for the project is 'Connection'.

The learning focus for your engagement is:

Identify the Key Skills/Principles/Statement of Learning to be developed

What will students learn...?

Timetabling

Classes will continue as normal. You and your students will engage this learning for up to 6 hours of contact time. The literary artist will visit during usual timetabled classes.

Note: Supervision and Substitution is not provided as part of Lemme Start!

Number of sessions (Maximum of 4)				
Date/times of visits				

Sessions (max. 6 sessions/visits)

Session 1: Brief outline of what will happen e.g. Will literary artist share their practice/process with the students? Will the teacher and literary artist facilitate a brainstorming session in Session 1 with the students or will this be done in advance by the teacher?

Agreed areas of learning to be covered in remaining sessions. Consider students' interests, age, stage and abilities.

Session 2.

Session 3.

Session 4.

Session 5.

Session 6

Teacher's Timetable

Class Time	Mon	Tues	Wed	Thurs	Fri

Workspace/room layout considerations

Discuss room layout (individual or group work) display, space to move ... etc.

Will all sessions take place in the classroom? Is there a class coming in before or straight after your session?

Resources

Materials or resources needed

Please list the materials needed and who will provide these:

Health & Safety/Insurance Checklist	Yes	No
Is the literary artist insured to be on the school premises?		
Has the literary artist supplied a copy of his/her Garda Vetting certificate?		
Does the teacher understand that they are responsible for the health and safety of students during the sessions?		
Do both the teacher and literary artist know the name and contact information of the Designated Liaison Person (DLP) in the school?		

Evaluation Event

Separate evaluation forms have been devised for teachers and literary artists. Forms can be found in **Appendix 1 and 2** in this booklet. Please take some time to read through and discuss in relation to Lemme Start!

The evaluation event has been arranged as follows:

Location and Date
<p>Poetry Ireland</p> <p>11.00am - 1.00pm</p> <p>Saturday 16th May 2020</p>

Agreed by	
<p>Name of Teacher:</p> <p>Signed:</p> <p>_____</p> <p>Date:</p>	<p>Name of Literary Artist: _</p> <p>Signed:</p> <p>_____</p> <p>Date:</p>







Appendix 1 Online Teacher Evaluation Form

*This is a **copy of the online** form to be completed by the **Teacher** at the end of the Lemme Start! Programme.

You can use the link below or the QR code provided.

<https://bit.ly/2q1AYHK>



Lemme Start! Teacher Evaluation Form

The purpose of this form is to capture your feedback and suggestions to evaluate the Lemme Start! programme.

1.Name and Address of School

2.School Roll Number

3.School Context - Tick where relevant.

- Community or comprehensive School
- Educate Together School
- Education Training Board (ETB)
- Voluntary Secondary School
- Gaelcholáiste
- DEIS
- Special School
- Co-educational
- All Boys
- All Girls
- Rural School
- Urban School

4.Name of Teacher

5.Name of Literary Artist

6.Number of students in the class

7.List the key learning (Key Skills, Statement of Learning or Principles) addressed during the Lemme Start! project

8.What did you learn during the project?

9.What were the key successes?

10.Outline the key challenges encountered.

11. I have sent the Data Agreement Form and the Principal, Teacher, Parent/Guardian, Student Photographic Consent Forms to Monaghan Education Centre.

12.How likely are you to apply to Lemme Start! again?

13.Any further comment?

An tSraith Shóisearach do Mhúinteoirí

Junior **CYCLE** for teachers

Junior Cycle for Teachers Support Service (JCT),

Monaghan Education Centre, Knockaconny, Armagh Road, Co. Monaghan, Ireland.

Tel: +353 47 74008 Email: info@jct.ie www.jct.ie

Follow us on twitter: [@JCforTeachers](https://twitter.com/JCforTeachers)